



# 2023 State of the City Address

Mayor Ryan L. Daniel



BUILDING A FUTURE TOGETHER

# Audience Participation!

Get your Camera Phones out  
and scan this QR Code:



# It should look similar to this:

🌐 When poll is active, respond at **PolleEv.com/ryandaniel207**  
📱 Text **RYANDANIEL207** to **22333** once to join

**What Best Describes your Occupation?**

Business  
Government  
Social Work  
Government  
Retiree  
Other

Powered by  **Poll Everywhere**





## Legend

- 1 Main Entryway / Access Drive
- 2 Entry Plaza with Park Signage
- 3 Public Art / Sculpture Display
- 4 Parking Lot (75 Spaces)
- 5 Existing Concessions / Restroom Facility / Police Training
- 6 Playground
- 7 Detention Basin
- 8 Amphitheater / Performance Space
- 9 Promenade Walk / Garden Space
- 10 Parking (33 Spaces)
- 11 Existing Weight Room Facility
- 12 Aquatic Center Entry Drive
- 13 Aquatic Center Parking (184 Spaces)
- 14 Russel and Evelyn Fahl Aquatics Center
- 15 Skate Park / Pump Track
- 16 Connecting Interior Access Drive
- 17 Relocated Bleachers
- 18 Multiuse Athletic Field with Synthetic Turf
- 19 Parking Lot with Recreation Center Drop-off (44 Spaces)
- 20 Entry Plaza with Outdoor Cafe Seating
- 21 GaGa Ball Pits
- 22 Recreation Facility (78,300 sq. ft.) with a track, indoor field, basketball courts and dining court
- 23 Indoor Playground
- 24 Recreation Facility Parking Lot (238 Spaces)
- 25 Restrooms / Concession Building
- 26 Multiuse Athletic Field
- 27 Youth League Multiuse Athletic Field
- 28 Playground Structure
- 29 Nature Pavilion / Trail Head Parking (42 Spaces)
- 30 Nature Pavilion / Trailhead
- 31 Nature Amphitheater
- 32 Low Ropes Course
- 33 High Ropes Course
- 34 Team Building Activity Station
- 35 Wetland Overlook
- 36 River Overlook / River Access
- 37 Vehicular / Pedestrian Bridge
- 38 Realigned Roadway
- 39 Realigned Blue River Trail
- 40 Parking (63 Spaces)
- 41 Pedestrian Access Point
- 42 Vegetative Screening / Earthen Berm
- 43 Pedestrian Walkway
- 44 Woodland Trail System
- 45 Pickleball Courts
- 46 Alternate Location For Playground Or Stormwater Basins
- 47 Pavilion

## Eagles Park: Phase I Improvements

### Concept Overall Plan

January 10, 2023

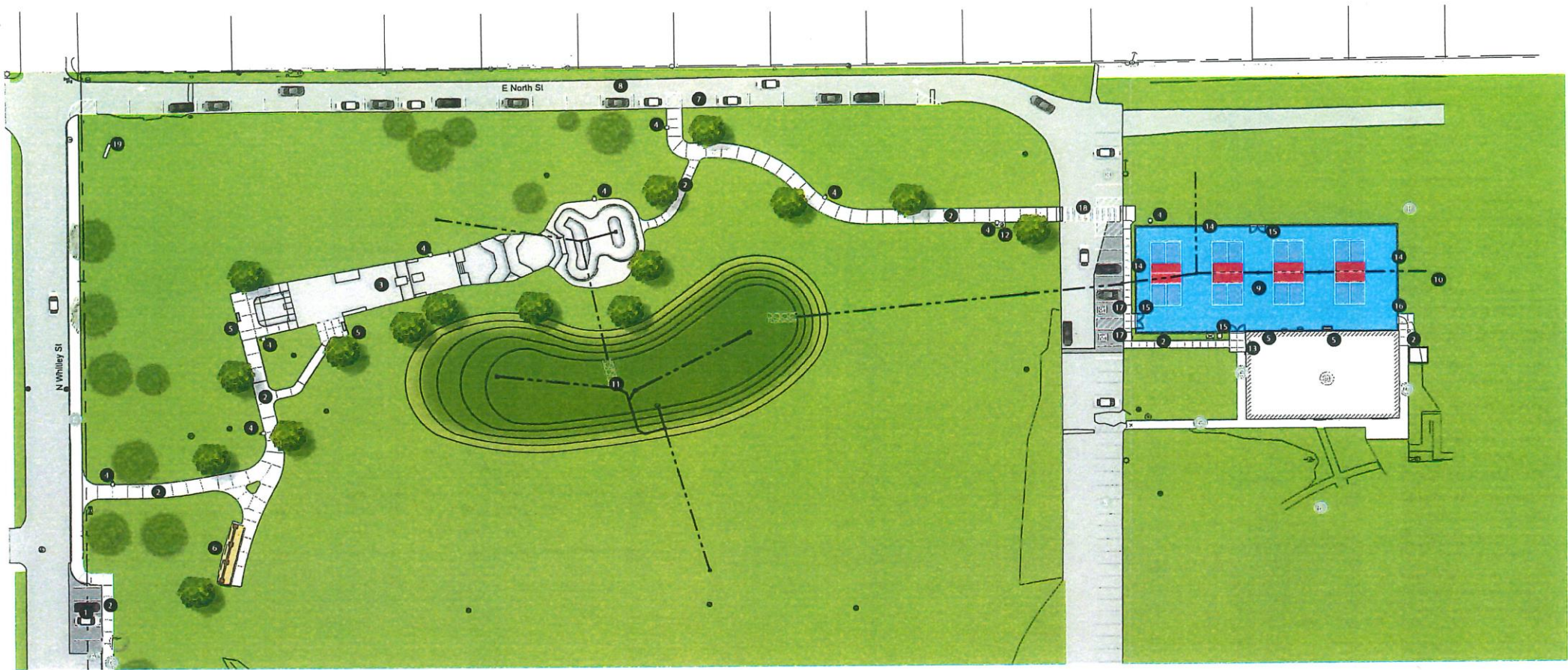
© 2023 Jones Petrie Rafinski - All Rights Reserved



JONES  
PETRIE  
RAFINSKI







## Legend

### Existing

- 1 On-Street Parking Along Whitley Street
- 2 On-Street Parking Along North Street
- 3 Walkway
- 4 Concessions / Restroom Facility / Police Training
- 5 Track and Field Amenities
- 6 Athletic Turf Fields

### Proposed

- 1 Whitley Street Parking (5 Spaces)
- 2 Walkway
- 3 Skate Park
- 4 Pole Light - Security Lighting Level (7)
- 5 Bench Node (4)
- 6 Swing Bench Node (3 Swings)
- 7 North Street Parking (24 Spaces)
- 8 North Street (One Way)
- 9 Pickleball Courts (4)
- 10 Future Court Expansion
- 11 Stormwater Basin
- 12 Trash Receptacle (1)

- 13 Water Fountain with Dog Bowl (1)
- 14 10' Chainlink Fence
- 15 10' Gate
- 16 5' Gate
- 17 ADA Parking
- 18 Pedestrian Crossing

- 19 Park Sign
- Stormwater Line

## Eagles Park: Phase I Improvements

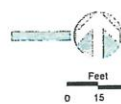
### Concept Enlargement Plan

January 10, 2023

© 2023 Jones Petrie Rafinski - All Rights Reserved

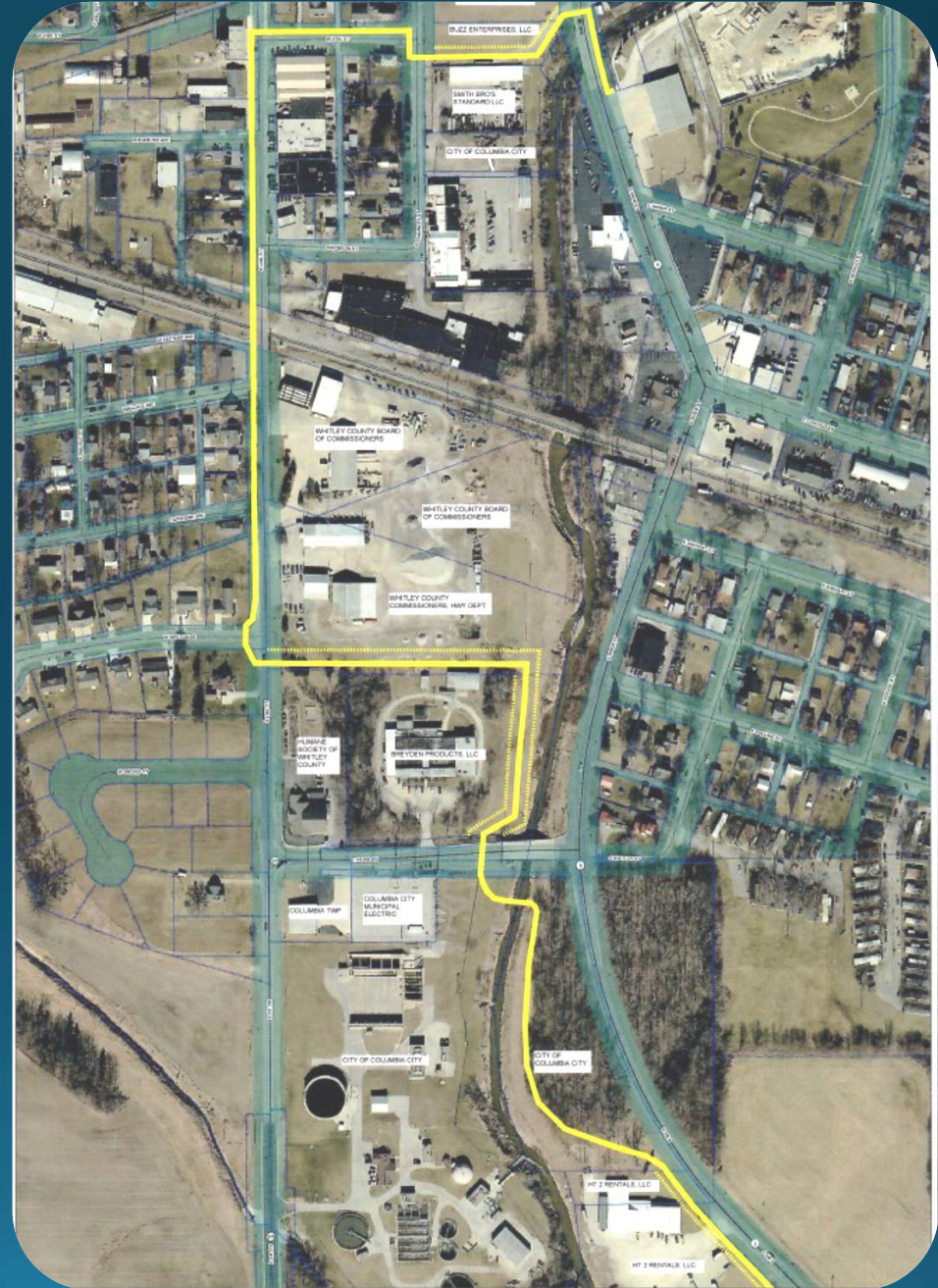


JONES  
PETRIE  
RAFINSKI





# Blue River Trail Expansion



# How Regularly do you use the Blue River Trail?

*Only Scan the QR code if you exited out of the Poll earlier.*





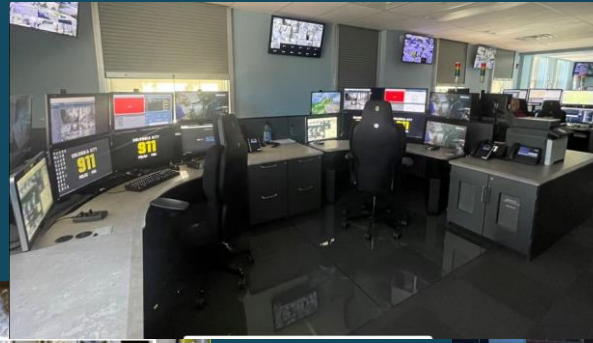
# Community Crossings 2023 Streets

- Connexion Way
- Mulberry Street
- Jeffrey Drive
- Jefferson Street
- W Van Buren
- Market Street
- Hancock Farm Road
- Many other streets to be crack-sealed





# Public Safety





SHARE OUR VIDEOS ON  
SOCIAL MEDIA USING  
#CCFDNEEDSYOU & BE  
ENTERED TO WIN ONE OF  
SIX \$50 GIFT CARDS TO  
LOCAL BUSINESSES



# #CCFDNEEDSYOU

## COLUMBIA CITY FIRE DEPARTMENT VOLUNTEERS NEEDED



**COLUMBIACITY.NET**  
CAMPAIGN PRODUCED BY DISRUPTUR



"NO ONE THINKS OF US, UNTIL THE  
MOMENT THEY REALIZE THEY NEED  
US, AND WE'RE ALWAYS THERE."

PAT ZICKGRAF, VOLUNTEER FIREFIGHTER SINCE 1978  
#CCFDNEEDSYOU

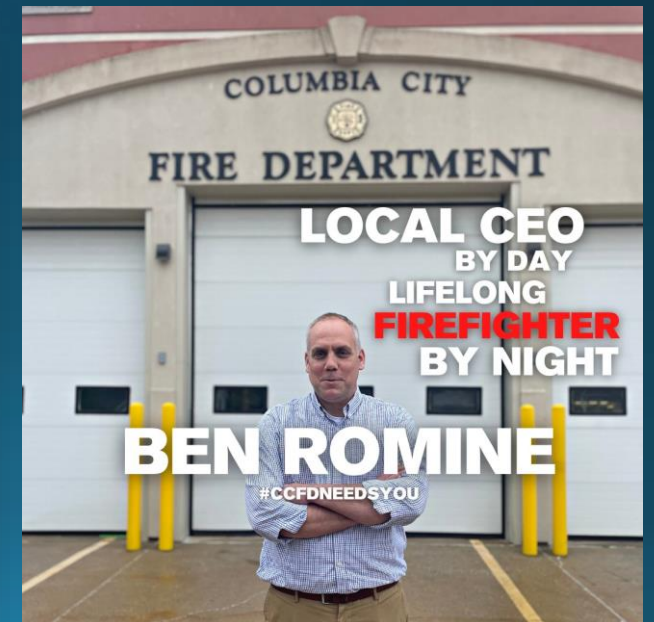


# Zach Gardner

#CCFDNEEDSYOU



#CCFDNEEDSYOU



**LOCAL CEO**  
BY DAY  
LIFELONG  
**FIREFIGHTER**  
BY NIGHT

# BEN ROMINE

#CCFDNEEDSYOU



**MADISON**

PROBATIONARY VOLUNTEER FIREFIGHTER  
CCHS CLASS OF 2022



# Veterans Monument



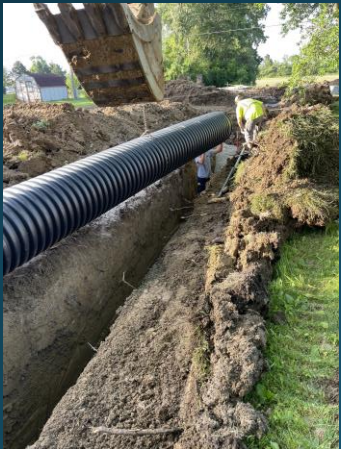
Bricks ship to  
the City for  
installation

**Order a Brick**  
to honor Whitley County's  
**Veterans**





# Westgate





# City Utilities





# City Utilities



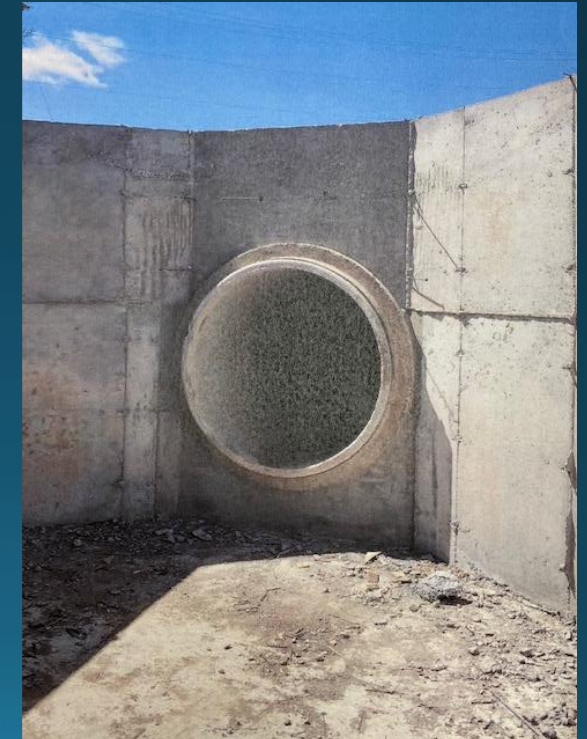


# City Utilities





# City Utilities

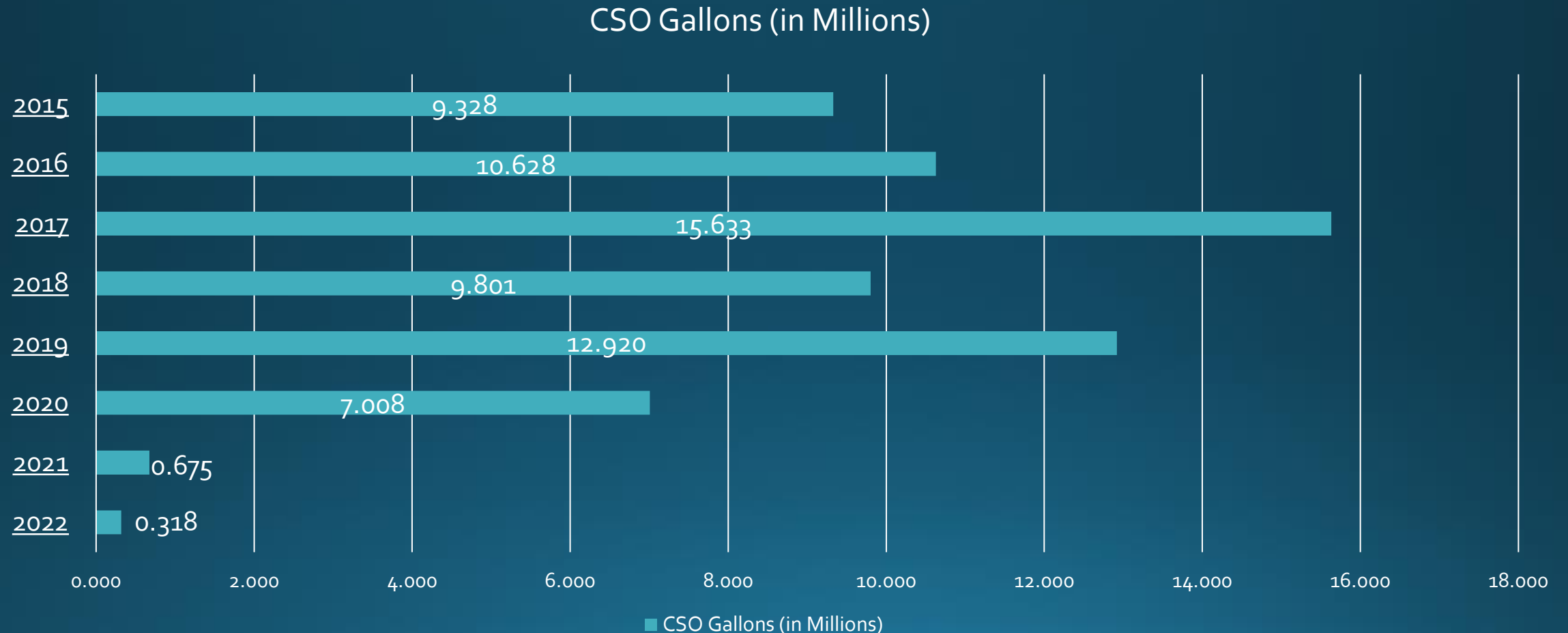


# What percentage of CSO Discharge was eliminated by the LTCP?

*Only Scan the QR code if you exited out of the Poll earlier.*



# CSO Discharge over the Past 8 Years





# Other Items to Note

- City Tax Rate dropped for 6<sup>th</sup> year in a row (9¢ in 2023)
- New Banners
- Redistricted the City
- Multiple New Stores and Restaurants



# Best Suburbs to Live In Near a Large City – 2022 Study

Anja Solum, CEPF® | SEP 21, 2022

SHARE



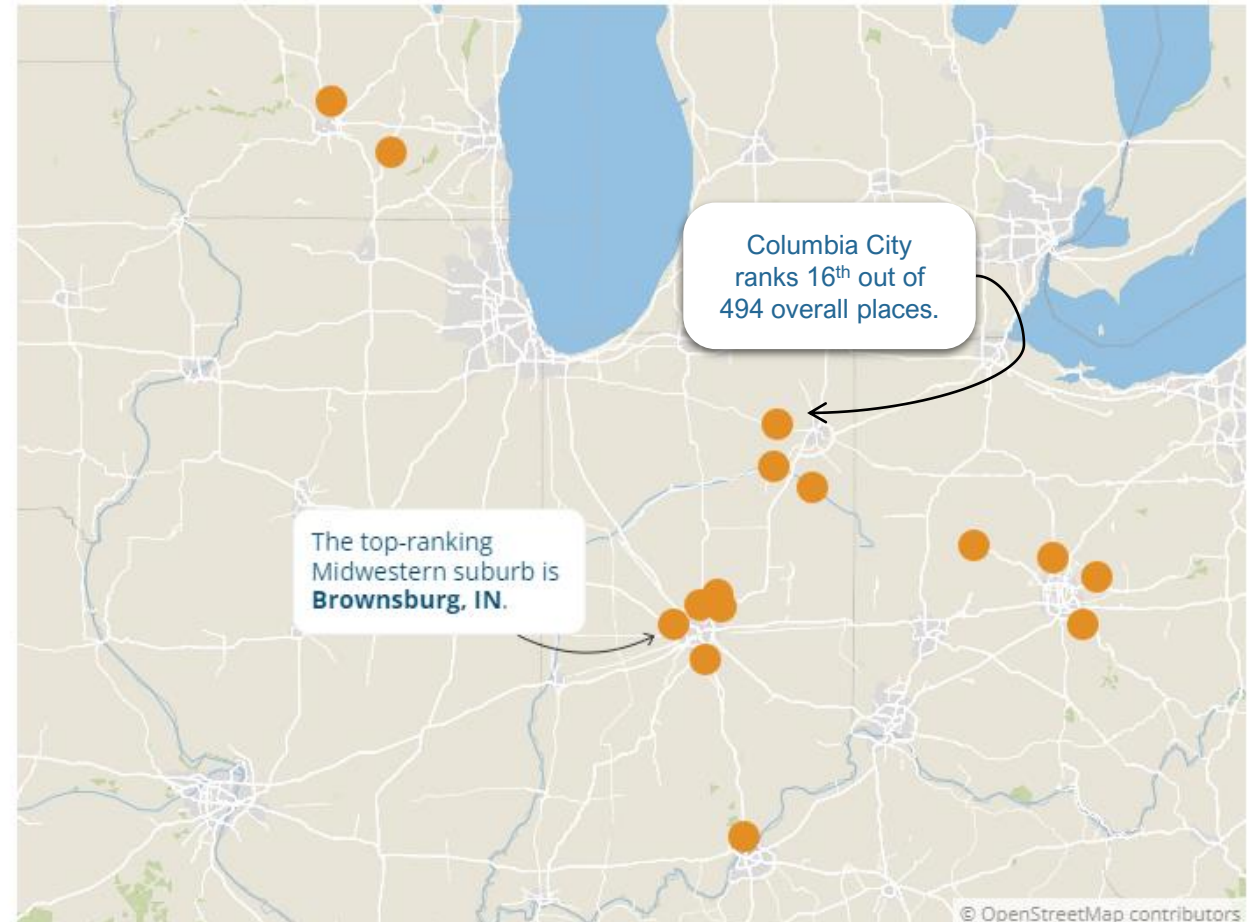
Large cities can be a great option for anyone looking for a walkable, fast-paced environment with easy access to shops and restaurants. However, the hustle and bustle of a large city isn't a one-size-fits-all proposition for everyone. Large cities are often expensive (average home values exceed \$1 million in a handful of places) and may have higher crime rates than their surrounding areas. Suburbs, in turn, can offer more

[affordable housing](#), lower crime rates and a variety of entertainment options.

In this study, SmartAsset uncovered the best suburbs to live in near a large city. Specifically, we compared data for close to 500 suburbs located within 15 minutes to an hour by car of a large city (those with a population of 250,000 or more). To determine their ranking, we analyzed 13 metrics across three categories: jobs, affordability and livability. For details on our data sources and how we put all the information together to create our final rankings, check out the Data and Methodology section below.

## Top 15 Midwest Suburbs to Live In Near a Large City

Hover over each suburb to see its nearest large city, total population and how it ranks overall. Use your mouse to zoom in on clustered areas!



Source: SmartAsset 2022 Study • Embed

smartasset



# Food and Beverage



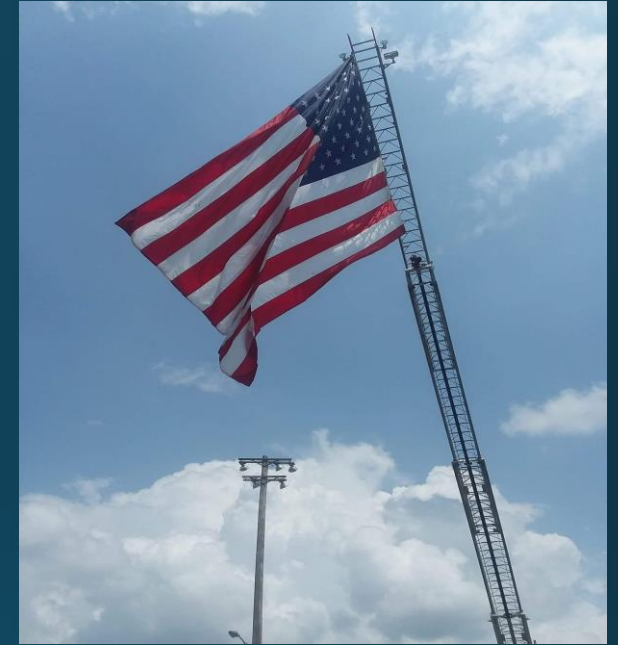
- Communities: Allen County (Fort Wayne), Shipshewana, Martinsville, Lebanon, Fishers, Delaware County (Muncie), etc.
- 1 Cent per dollar for prepared food
  - Served with napkin or utensils
  - Restaurants, Gas Station soft drinks, Kroger sushi, etc.
  - No Groceries
- 20-year Sunset Provision
- Anticipated Revenue of \$400,000 per year
- All Funds go to build Eagle Park
- Support from WC Chamber, Columbia City Connect, & Many Restauranteurs





# Summer in the City

June	3	School's Out Bash!   Devol Field
	10	City Swap
	17	Community Bingo   Eagle Park
July	1	Scavenger Hunt   Blue River Trail
	8	Munch & Mingle   Downtown
	22	Sample the Arts   Courthouse Square
	29	Film & Float   Aquatics Center
August	12	Public Safety Fest   Courthouse Square



Thanks  
to our  
Sponsors!



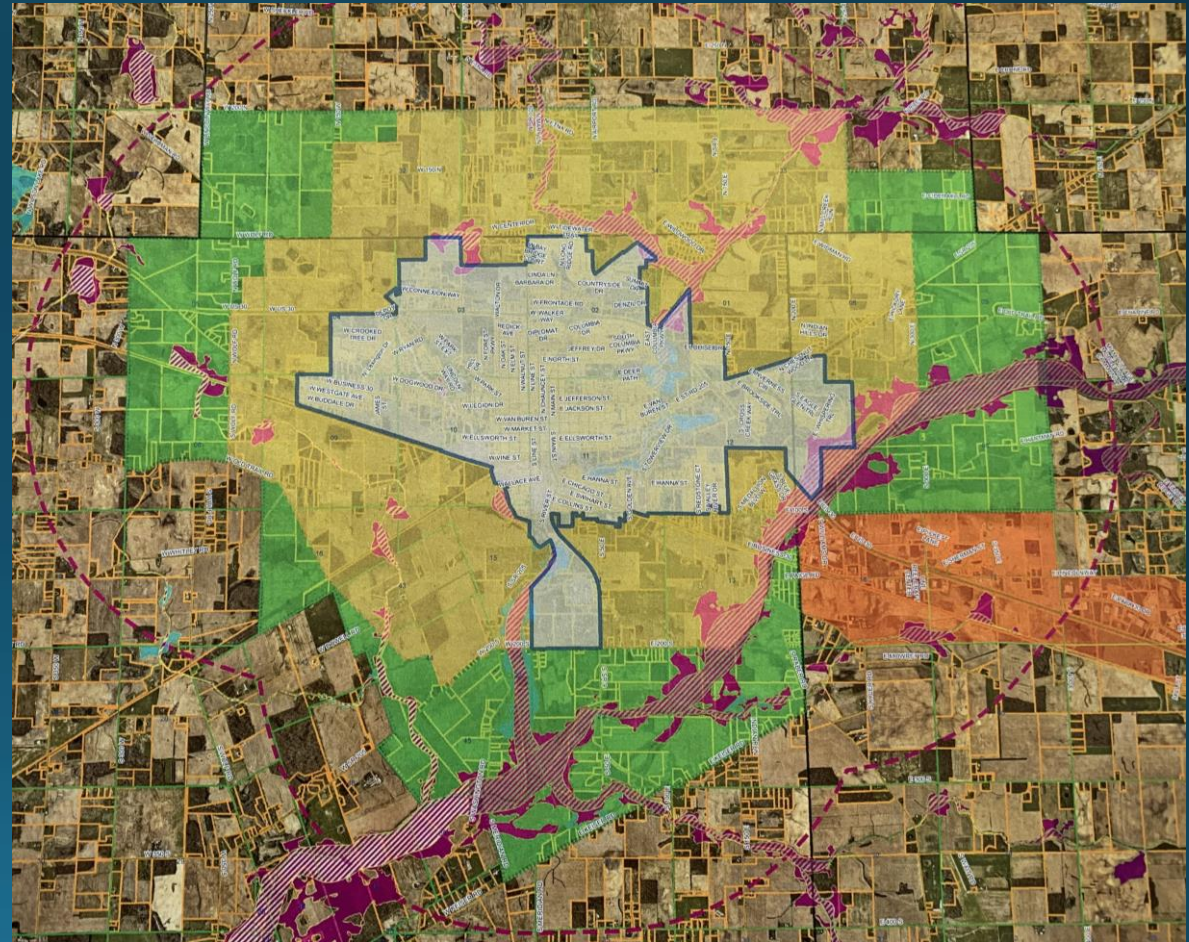
# Neighborhood Captains





# Extra Territorial Jurisdiction

- Hasn't changed in 50+ years
- Planning Territory Only
- NOT Annexation
- Does not change Tax Rates
- Does not change Elected Officials
- Only Change: City Plan Commission for Zoning/Building changes instead of County Plan Commission





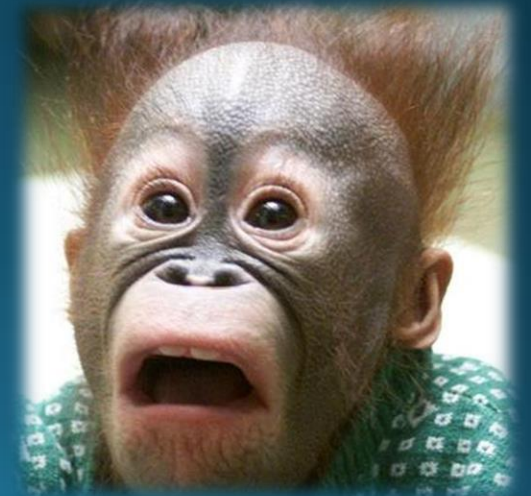




# Materials and Chemical Costs



- Yearly Comprehensive Rate Review
  - Anticipated 2% across the board utility adjustment for 2023
- Concrete Costs up 8%
- Soil Costs up 10%
- Asphalt Costs up 11%
- Wastewater Pumps up 23%
- Chlorine gas Costs up 80%
- Meter base Costs up 133%
- Padmount Transformers up average around 200%





# Test Kitchen

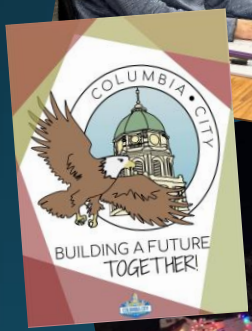


# What Type of New Restaurants would you support in our community?

*Only Scan the QR code if you exited out of the Poll earlier.*









- Give me a Word or two that finishes this sentence:

The State of our City is.... \_\_\_\_\_

*Only Scan the QR code if you  
exited out of the Poll earlier.*



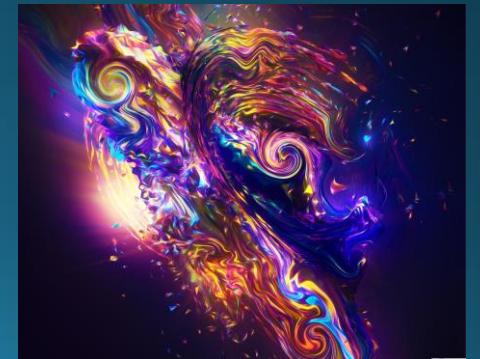
# The State of our City is **VIBRANT!**

## vibrant adjective

vi·brant 'vī-brənt 

[Synonyms of vibrant >](#)

- 1 a (1) : pulsating with life, vigor, or activity  
| a vibrant personality





# Thank you!

